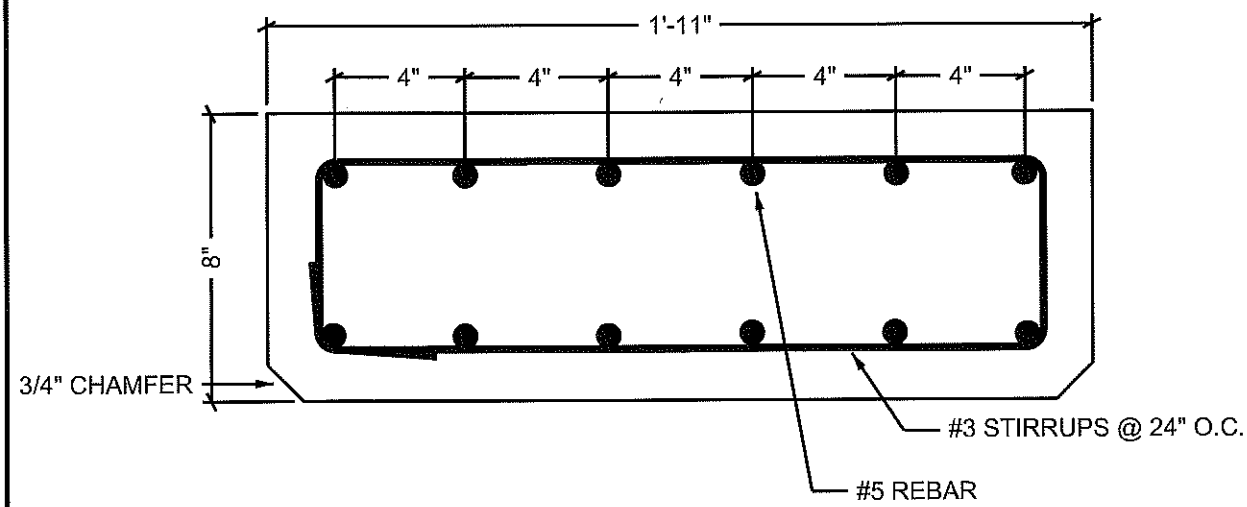



PLAN VIEW  
16' BOAT RAMP PLANK

- NOTES:  
 (1) REBAR SHALL BE WIRE TIED TO STIRRUPS.  
 (2) THERE SHALL BE NO LESS THAN 1" OF CONCRETE COVER OVER REINFORCING STEEL.  
 (3) WEIGHT 3075 LBS.



SECTION VIEW  
16' BOAT RAMP PLANK

REBAR & MESH					
BAR#	MARK	LENGTHS			
		QTY.	BEND	LENGTH	WEIGHT
#3		10	—		
#5		12	⬭		



**Fairbanks  
Precast & Rebar**

1122 BRADWAY ROAD.  
 NORTH POLE, AK. 99705  
 PH: (907) 488-9763  
 FAX: (907) 488-8300

SCALE: NO SCALE	DRAWN BY: T.E.C.
DATE 1/25/2010	REVISED: 2/28/2011
16' BOAT RAMP PLANK	