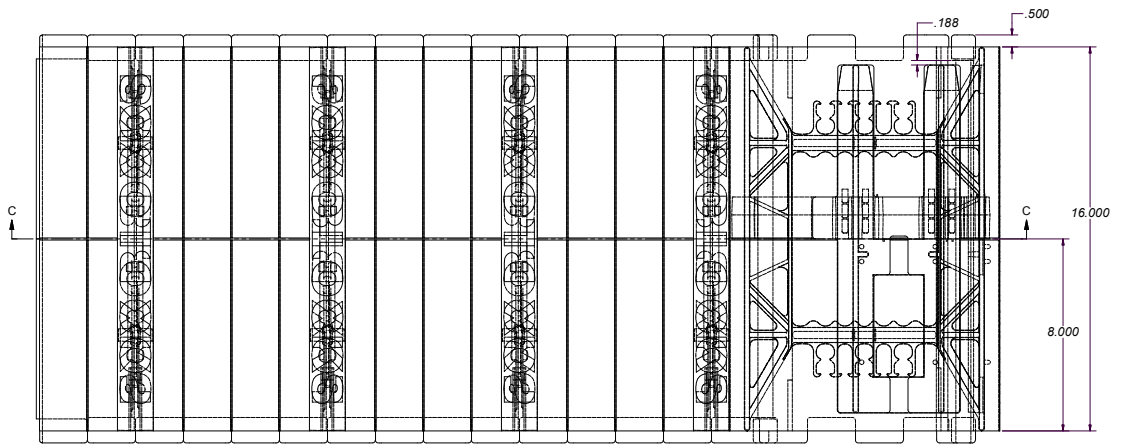
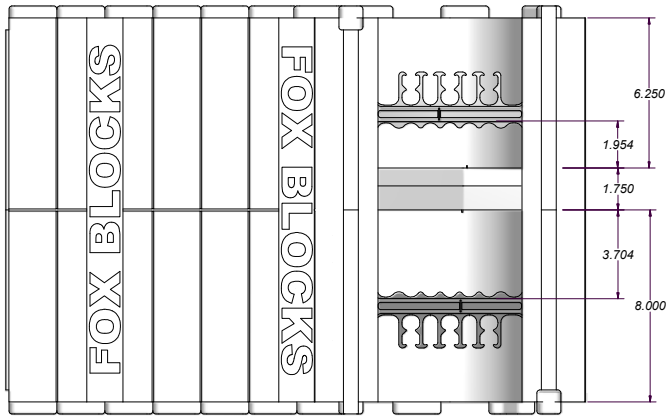
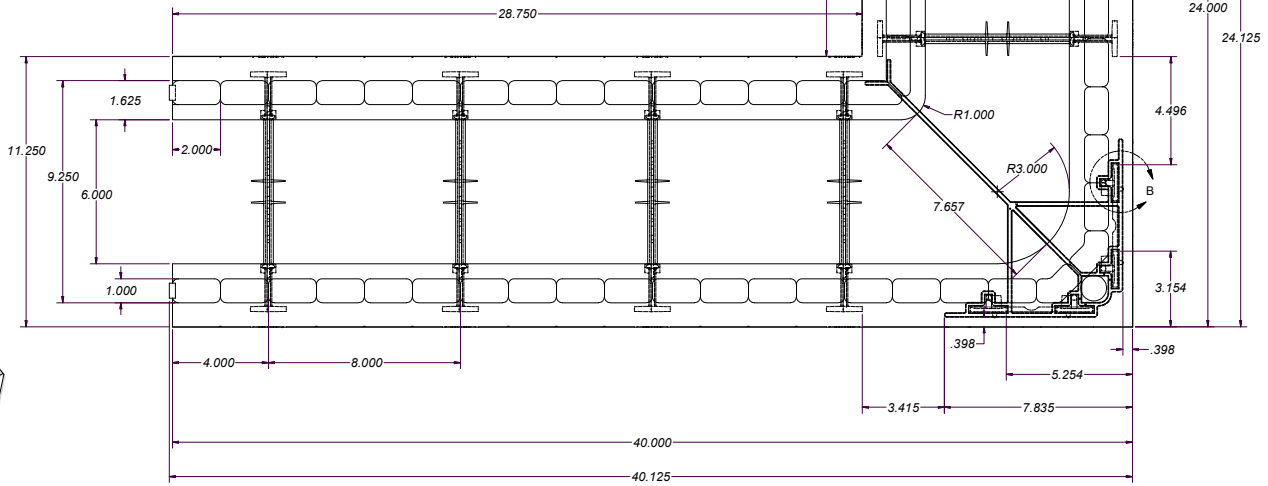
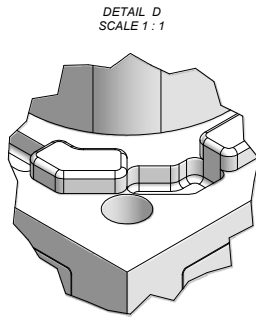
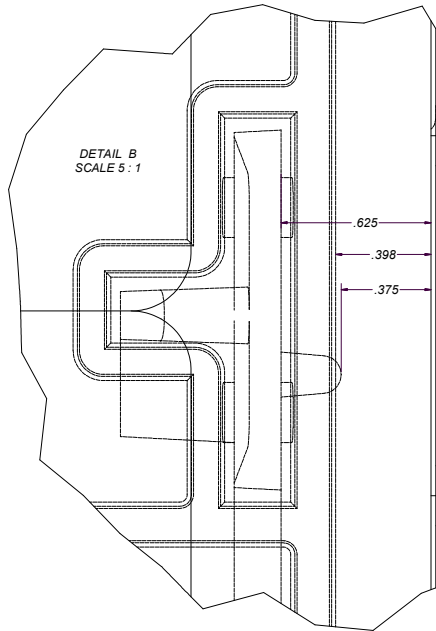


SHOP DRAWING APPROVED: YES NO  
 SHOP DRAWING APPROVED AS NOTED: YES NO  
 SHOP DRAWING RESUBMIT: YES NO  
 AUTHORIZED SIGNATURE: \_\_\_\_\_  
 DATE SUBMITTED: \_\_\_\_\_



THIS DRAWING, INCLUDING THE INFORMATION IT CONTAINS, IS THE PROPERTY OF AIRLITE PLASTICS COMPANY. THIS DRAWING IS LOANED STRICTLY ON THE CONDITION THAT IT WILL NOT BE REPRODUCED OR COPIED IN ANY MANNER, AND THAT THE INFORMATION IT CONTAINS WILL BE USED SOLELY IN CONNECTION WITH WORK BEING PERFORMED FOR, OR SPECIFICALLY AUTHORIZED IN WRITING BY, AIRLITE PLASTICS COMPANY.		AIRLITE PLASTICS COMPANY © 2004	
DESIGN: JeffB	DATE: 7/31/2009	Airlite Plastics Co. 6110 Abbott Drive, Omaha NE 68110-2865	
SCALE: None	APP: GAP	TITLE: 6" ICF corner wall form	
PACKAGE: None	REVISIONS: None	CUSTOMER: Fox Blocks	
EMPLOYMENT: None	SHRINKAGE: None	NOTES / COMMENTS: None	
WEIGHT: 7.11 lbs. @ surface area - outside	2.58 cu. ft. @ EPS	SPECIES: None	
MATERIAL: E.P.S. / P.P.	4.61 sq. ft. surface area - inside	Corner block assembly v2	
	3.06 cu. ft. @ concrete		