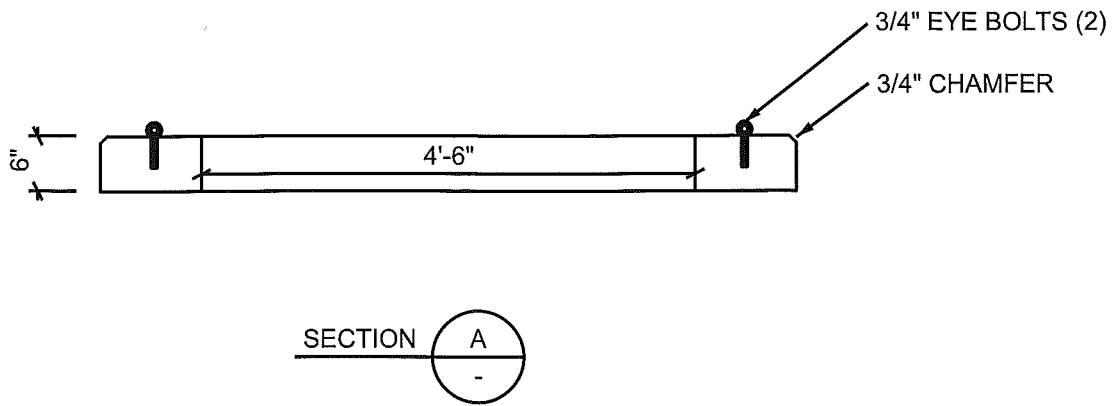







NOTES:
 REINFORCEMENT TO BE
 #4 REBAR @ 12" OCEW
 WEIGHT: APPROX: 1800 LBS.



REBAR & MESH					
BAR#	MARK	LENGTHS			WEIGHT
		QTY.	BEND	LENGTH	
4		6		6'	
4		5		2'-9"	
4		4		4'-2"	
4		2		1'8"X1'-3"X1'8"	

	1122 BRADWAY ROAD. NORTH POLE, AK.99705 PH: (907) 488-9763 FAX: (907) 488-8300	
	SCALE: NO SCALE	DRAWN BY: T.E.C.
DATE 1/22/2010	REVISED: 2/10/2010	
GVEA UM1-2		