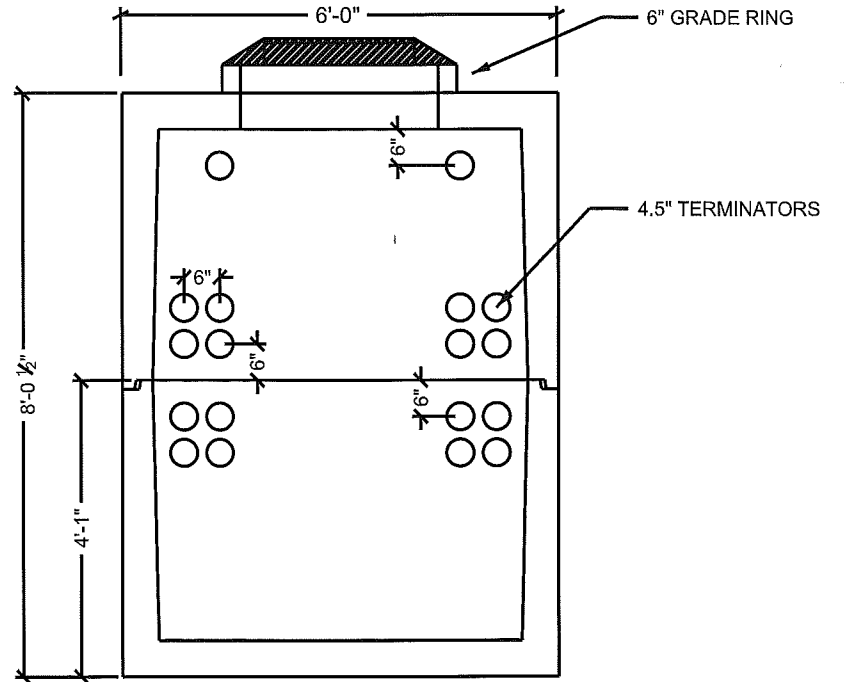
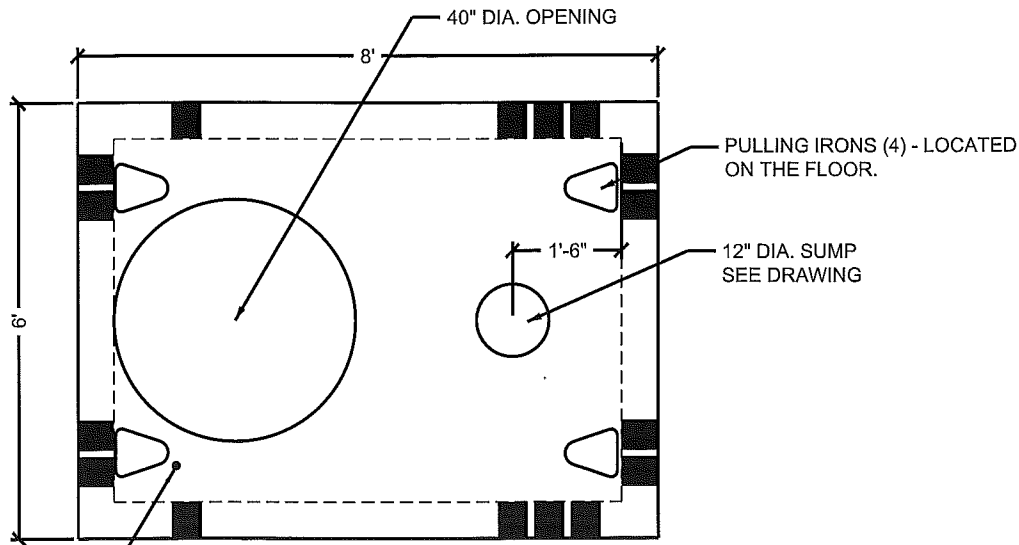


SIDE ELEVATION



END ELEVATION
 SHOWING GR & CASTING



GROUND ROD HOLE 1" DIA.

APPROXIMATE WEIGHT:
 TOP: 10,000 LBS.
 BOTTOM: 10,000 LBS.

REINFORCEMENT:
 #5 12" O.C.E.W. WITH ADDITIONAL
 #5 AROUND 40" DIAMETER OPENING.

WE CAN INSTALL CUSTOM BLOCKOUTS
 OR DIFFERENT SIZED TERMINATORS
 WHERE NEEDED.

		1122 BRADWAY ROAD. NORTH POLE, AK.99705 PH: (907) 488-9763 FAX: (907) 488-8300	
		SCALE: NO SCALE	DRAWN BY: T.E.C.
DATE 2/9/2010		REVISED: 2/19/2010	
FTWW 6'X8'X8' O.D. COMM VAULT			